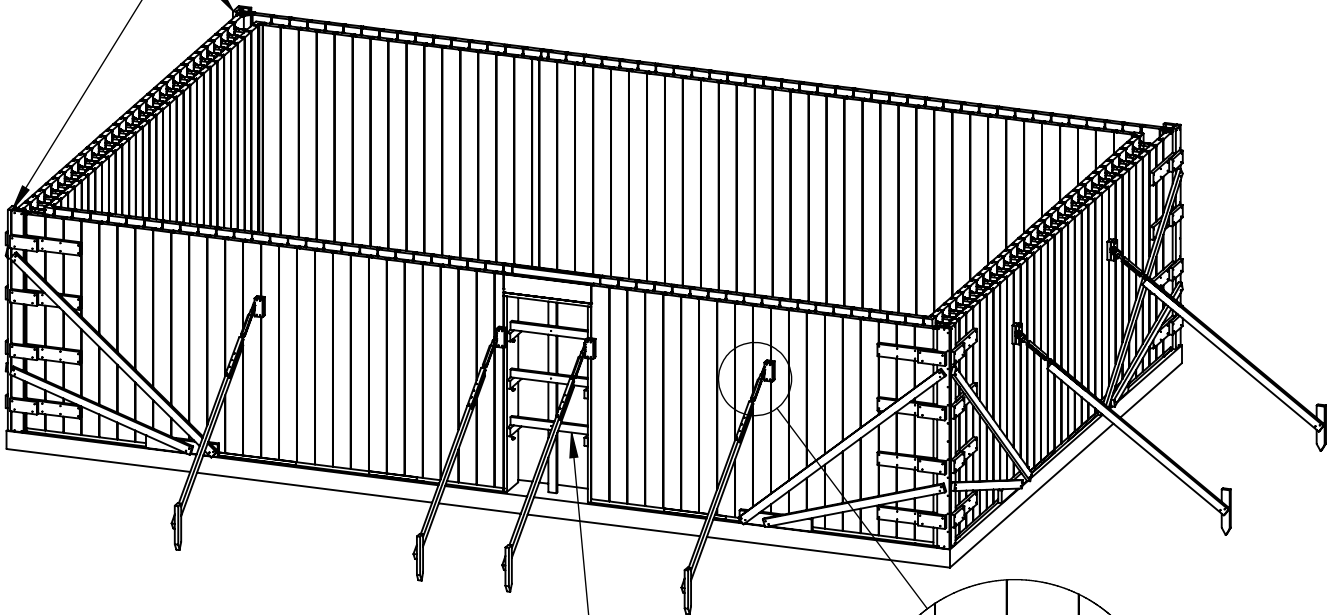
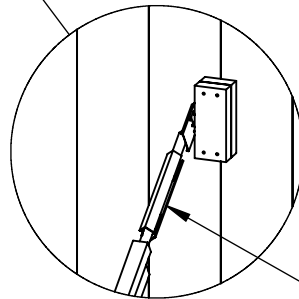


BRACE ALL CORNERS



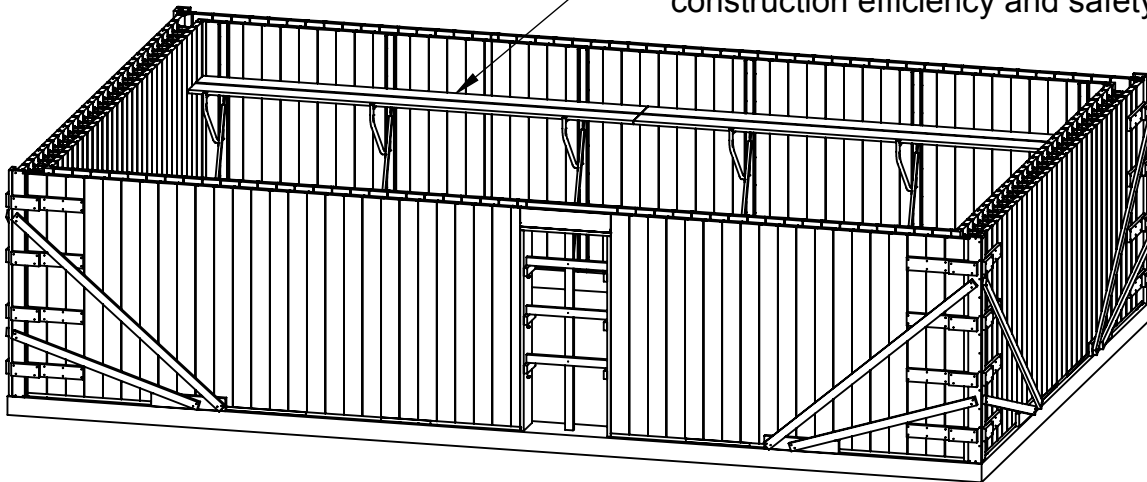
Brace one side of each wall as needed to keep wall plumb and straight. Turnbuckles make the process easier.

brace all openings vertically and horizontally



2x4 with Symons™ Turnbuckle

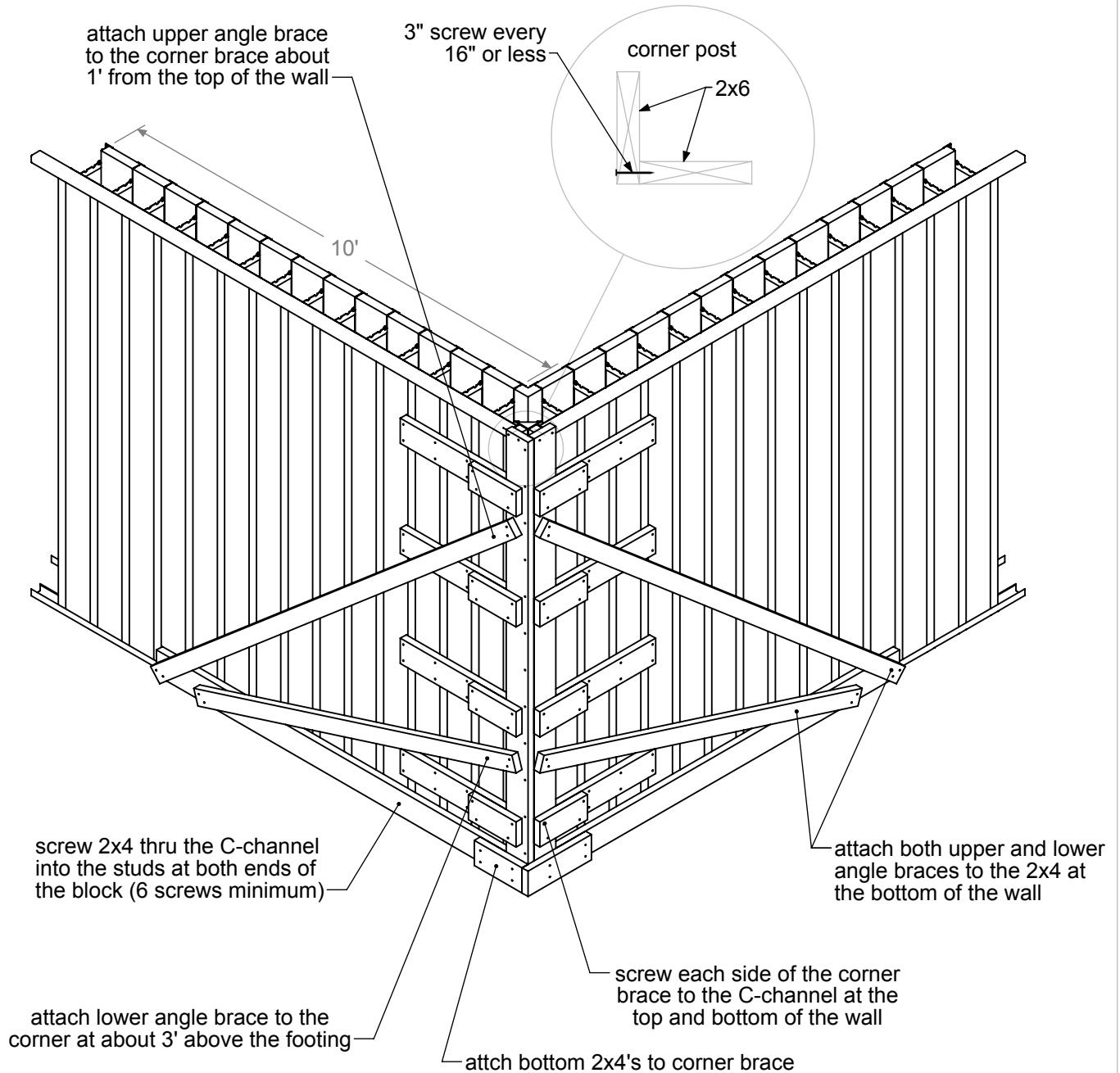
an ICF scaffold system can be used in place of 2x4 kickers for greater construction efficiency and safety



# Use two screws at all connection points

Make certain the corner form is tight into the corner brace

build about 10' from corner in each direction before installing bracing



Corner Bracing

9' High or Less

TF Forming Systems, Inc.  
800-360-4634  
[www.TFSystem.com](http://www.TFSystem.com)

Date: 11/12/2010