

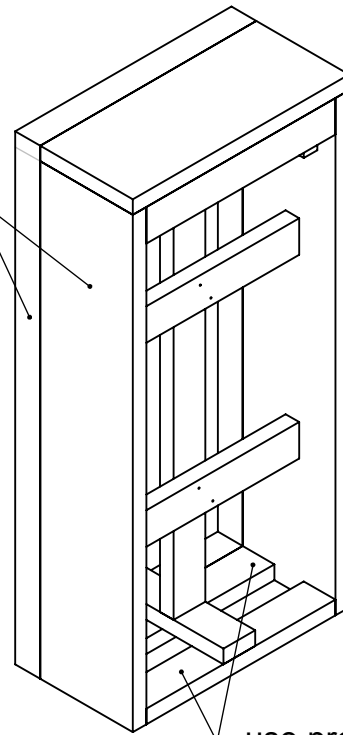
## Door Installation

TF Forming Systems, Inc.  
 800-360-4634  
[www.TFSystem.com](http://www.TFSystem.com)

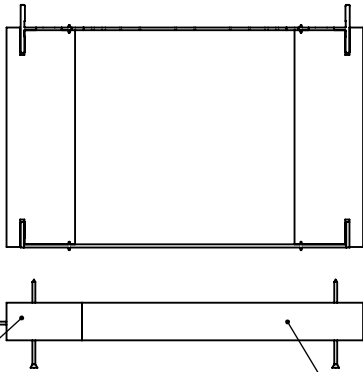
Date: 9/24/2010

window bucks may be assembled ahead of time for increased speed and efficiency at the job site

sides of window bucks must be pressure treated lumber unless using Thermo-Form shut-off studs

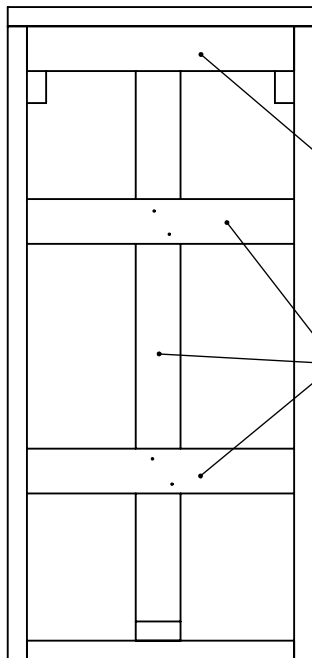


use pressure treated 2x4 lumber for base



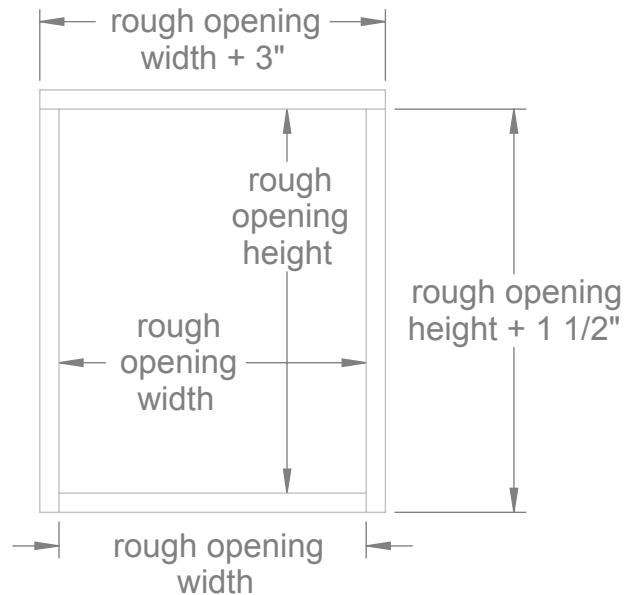
a furring strip may need to be used to fill out the window cavity for 8" or larger wall systems

rip lumber to fit the overall width of the system when using 6" wall systems



installing header bracing at this time will help keep window square

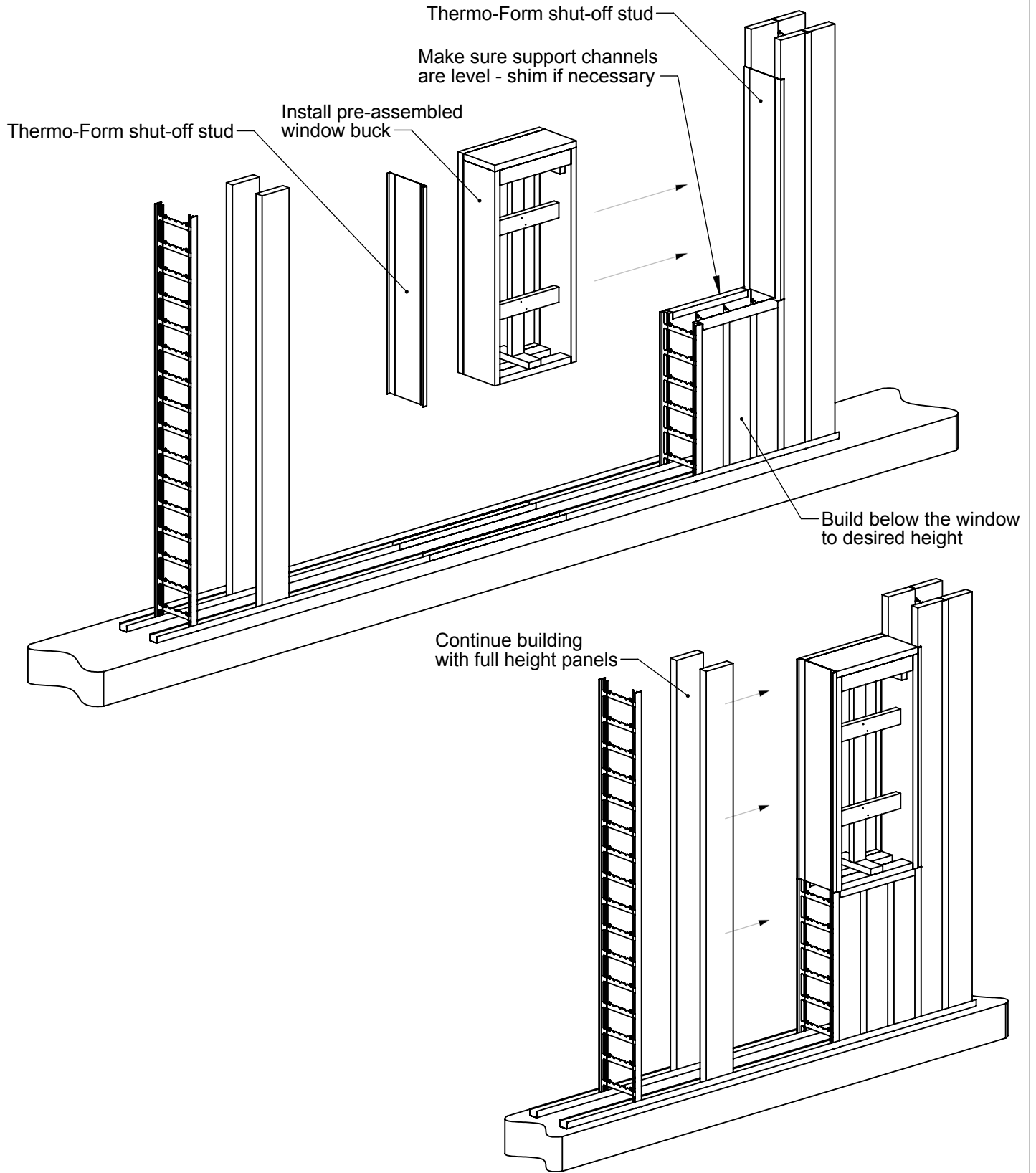
center bracing must be in place before pouring the wall



## Window Bucks

TF Forming Systems, Inc.  
800-360-4634  
www.TFSystem.com

Date: 5/12/2010



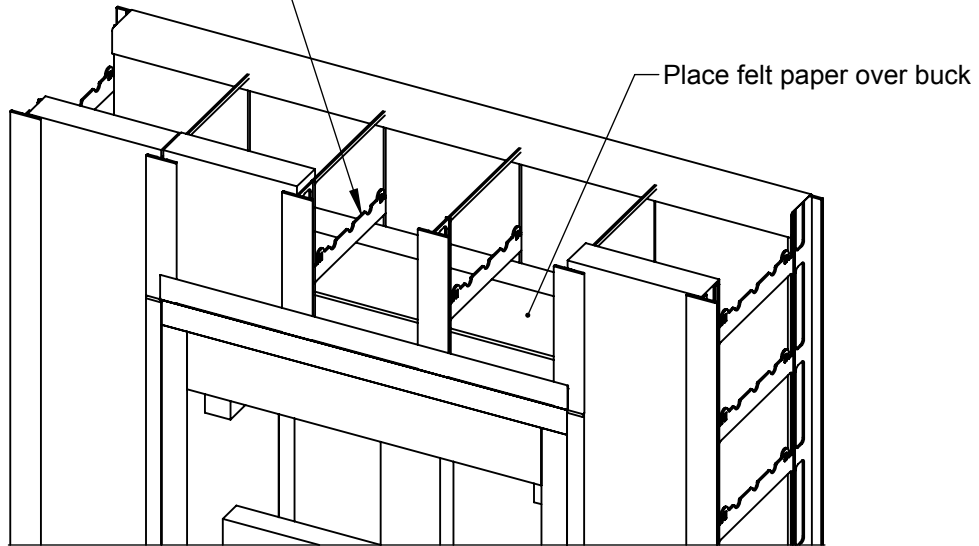
## Window Installation

TF Forming Systems, Inc.  
 800-360-4634  
[www.TFSystem.com](http://www.TFSystem.com)

Date: 9/24/2010

**Vertical Header Method**  
Use this method for headers greater than 8" in height

Cut studs 1/2" short of poly height



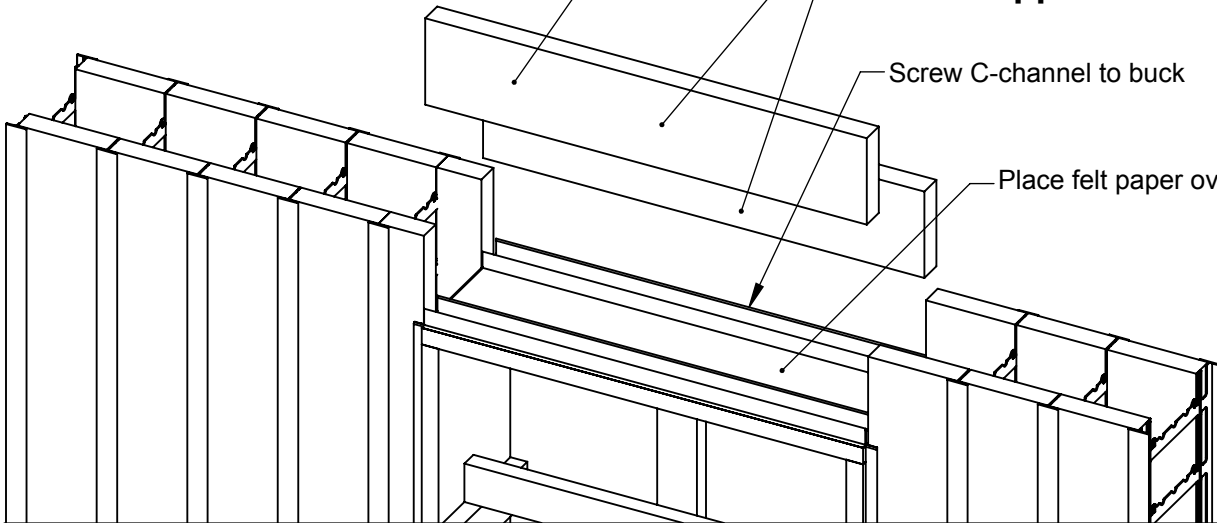
**Horizontal Header Method**  
Use this method for headers less than or equal to 8" in height

rip poly panels to required height

**Header forms must have spreader bracing in this application**

Screw C-channel to buck

Place felt paper over buck



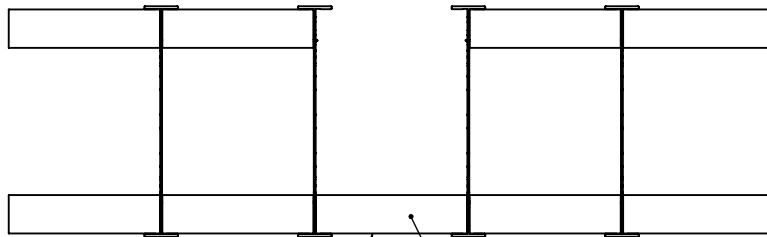
Window and Door Headers

TF Forming Systems, Inc.  
800-360-4634  
[www.TFSystem.com](http://www.TFSystem.com)

Date: 9/29/2010

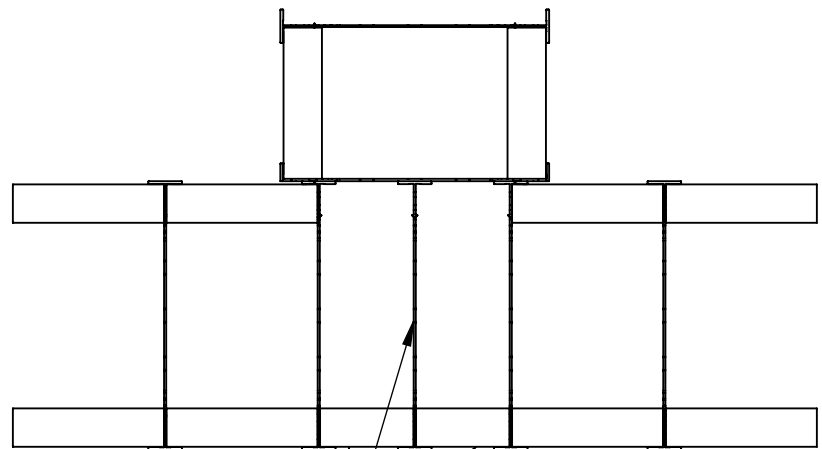
Thermo-Form stud with half flanges cut off in the field.

Use 1 5/8" coarse thread coated drywall screws spaced 12" vertically.



Brace and plumb back surface before attaching the stud of the intersecting wall.

When using 8" or lesser wall system, rip this splice panel to the same width as the intersecting wall cavity.



When using 10" or larger wall system, 2 equally sized splice panels with a stud rail joining them must be used.  
**Contact TF System representative for bracing method.**

T Intersection Top View

TF Forming Systems, Inc.  
800-360-4634  
www.TFSystem.com

Date: 11/3/2010